

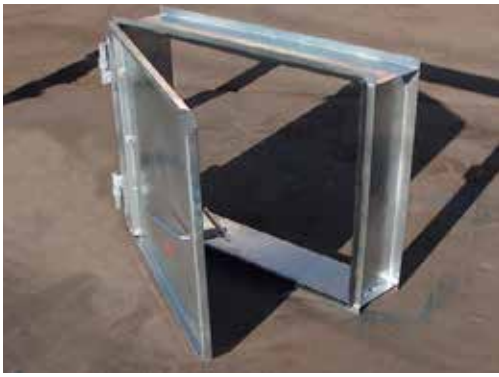
GMS

MINE REPAIR & MAINTENANCE



FABRICATION

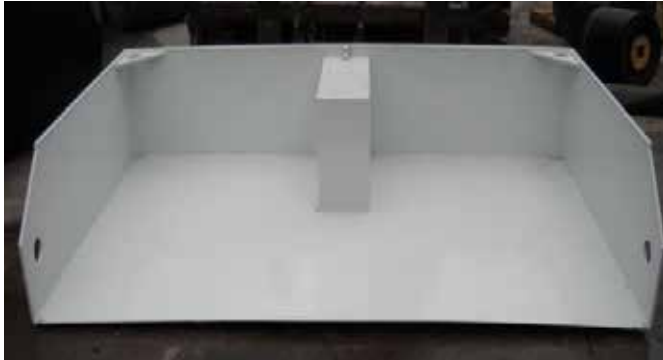
WWW.GMSMINERREPAIR.COM



Doors (Pages 3-6)



Hauling Equipment (Pages 7-9)



Doors (Page 10)



Hauling Equipment (Page 11)



Other Products (Page 11-15)

GMS Mine Repair & Maintenance deploys three fabrication facilities conveniently located throughout the United States to suit the needs of all our clients. GMS design engineers work closely with the sales team to collect customer data and provide 3-D and 2-D drawings for customer approval. Custom products are fabricated daily to meet any mining needs.

GMS Corporate Region Fab Shop
170 Leon White Road
Mt Lake Park, MD 21550

GMS North Region Fab Shop
331 Eldersville Road
Burgettstown, PA 15021

GMS Midwest Fab Shop
1651 Progress Drive
Madisonville, KY 42431

Gravity Close Doors

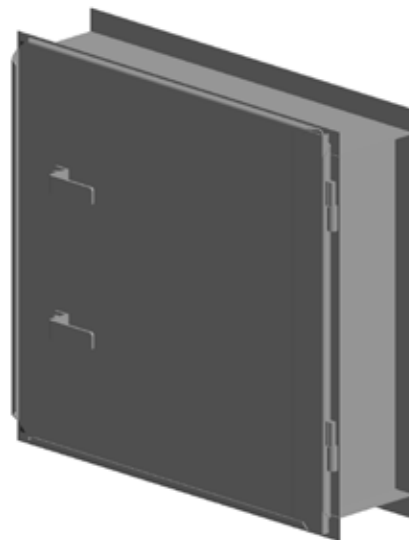
| W | H | D | Material (Ga) |
|----|----|------|---------------|
| 30 | 30 | 6, 8 | 12, 14 |
| 32 | 34 | 6, 8 | 12, 14 |
| 36 | 36 | 6, 8 | 10, 12, 14 |



- Available in galvanized or painted versions
- Bar latch or self-latching available
- Single flanged for easy installation
- Flat gasket seal
- Custom sizes available upon request

Reversible Doors

| W | H | D | Material (Ga) |
|----|----|------|---------------|
| 30 | 30 | 6, 8 | 12, 14 |
| 32 | 34 | 6, 8 | 12, 14 |
| 36 | 36 | 6, 8 | 10, 12, 14 |



- Door can be utilized on either side of frame
- Available in galvanized or painted versions
- Single or double latching
- Flat or bulb gasket seal
- Custom sizes available upon request

Spring Loaded



| W | H | D | Material (Ga) |
|----|----|------|---------------|
| 30 | 30 | 6, 8 | 12, 14 |
| 34 | 34 | 6, 8 | 12, 14 |
| 36 | 36 | 6, 8 | 12, 14 |
| 30 | 60 | 6,8 | 12 |
| 36 | 60 | 6,8 | 10,12 |

- Available in galvanized or painted versions
- Self latching or bar latching
- Flat or bulb gasket seal
- Custom sizes available upon request

Spring Loaded, Double Latching



| W | H | D | Material (Ga) |
|----|----|------|---------------|
| 30 | 30 | 6, 8 | 12, 14 |
| 34 | 34 | 6, 8 | 12, 14 |
| 36 | 36 | 6, 8 | 12, 14 |
| 48 | 48 | 6,8 | 12 |
| 30 | 60 | 6,8 | 12 |

- Available in galvanized or painted versions
- Heavy gasket and double latching for a tighter seal
- Custom sizes available upon request

Equipment Doors

| W | H | D | Material (Ga) |
|----|----|------|---------------|
| 48 | 48 | 6, 8 | 12 |
| 60 | 48 | 6, 8 | 12 |
| 72 | 48 | 6, 8 | 10, 12 |



- Channel frame construction
- Changable bottom sweep
- Easy installation
- Custom sizes available

Drive Thru Doors

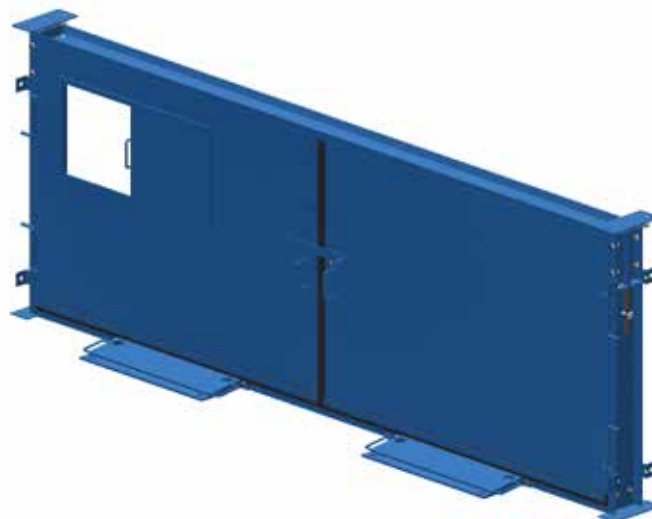
| W | H | D |
|----|--------|------|
| 4' | 8-16' | 6, 8 |
| 5' | 8-16' | 6, 8 |
| 6' | 10-16' | 6, 8 |
| 7' | 16-20' | 8,10 |



- Bolt-together channel or heavy beam construction
- Changable bottom sweep
- Various latching mechanisms available
- Custom sizes available

Engineered Doors

| W | H | D |
|----|--------|-------|
| 5' | 10-14' | 8-12" |
| 6' | 10-14' | 8-12" |
| 7' | 10-14' | 8-12" |



- Measurement is Passable Opening
- Adjustable Frame Height at 6" increments
- Sliding Pressure Relief Door
- Designed for 11" Water Gauge
- Custom variations available upon request

Combination doors

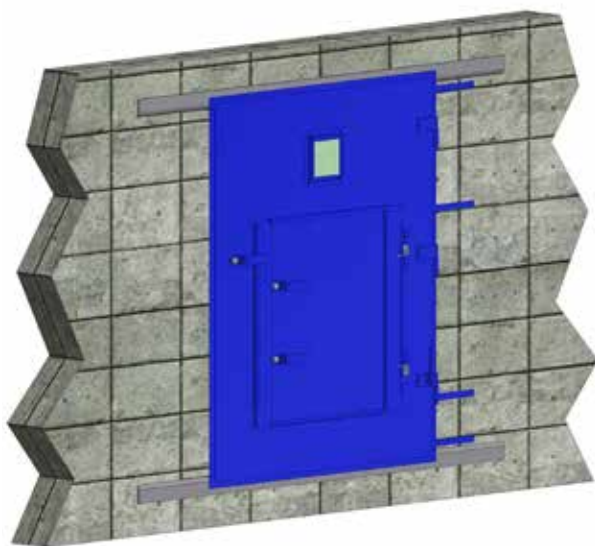


Designed with opposable slide-away doors with 84" maximum pass-through and for 8" block wall construction.

Features include:

- 8" sight glass windows
- 30"x30" spring loaded mandoor
- Draw latch, 4400 lbs work load
- Available in custom sizes per mine request

Heavy Duty Man Doors

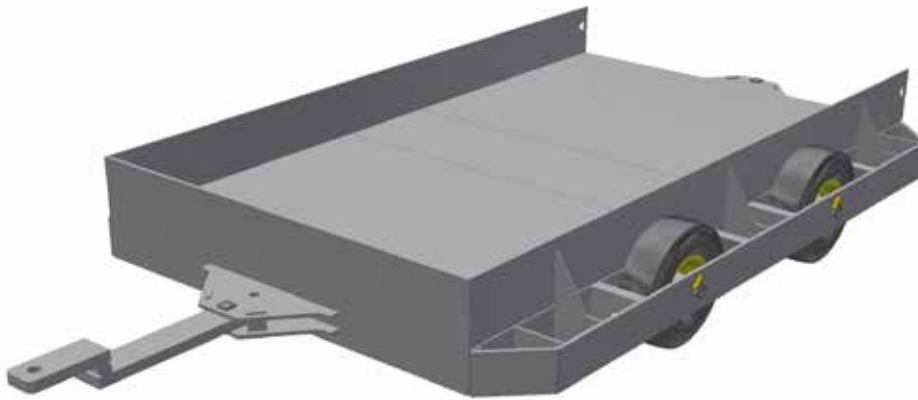


Designed for block wall installation, 60" maximum pass-through, heavy 12 Ga construction.

Features include:

- 8" sight glass windows
- 30"x30" spring loaded mandoor
- 60" removable door
- Draw latch, 1100 lbs work load
- Available in custom sizes per mine request

Supply Trailers



Supply trailers are designed with out without sides for haulage of any mining and construction materials. All supply trailers can be custom designed.

Features include:

- Tow behind or scoop mobile
- Steel or solid rubber tires
- Available in low-profile version

Standard Sizes:

- 6' W x 12' L
- 7' W x 12' L
- 7' W x 14' L
- 7' W x 16' L
- 7' W x 20' L
- 8' W x 20' L

Engineered Trailers

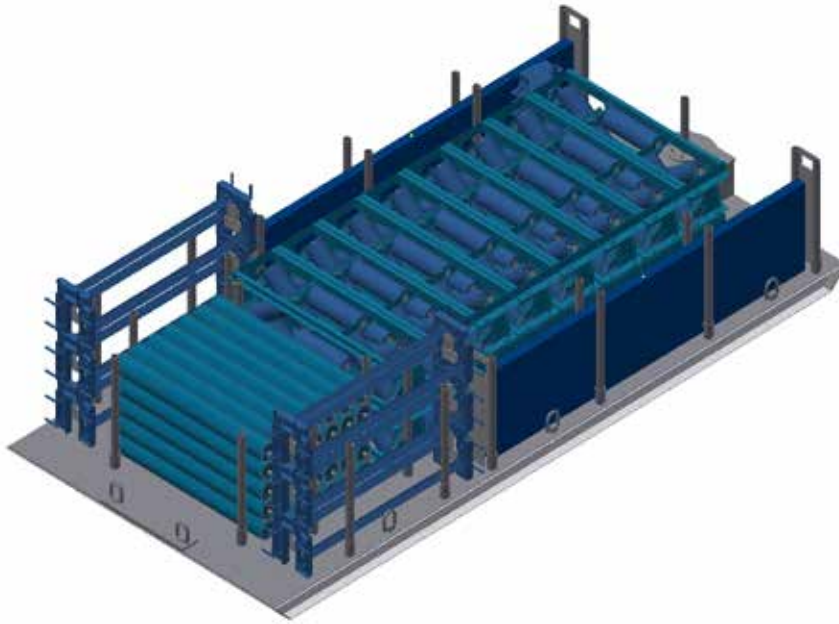


Engineered trailer solutions are available per provided specifications and requirements for most mining needs. These trailers are designed for heavy hauling, rigorous working environments and can be customized based on hauling needs.

Base design includes:

- 15 ton max capacity
- Severe duty fabricated frame
- 78" x 180" loadable deck area
- 22" deck height
- 20" steel wheels, solid shaft
- Spherical roller and thrust pack bearings
- 1" d-rings for tiedown
- Impact guarding perimeter guarding

Structure Haulers



Standard designs include:

- 100 ft catenary structure
- 120 ft catenary structure
- 140 ft catenary structure
- 100 ft rigid rail
- 140ft rigid rail

Features can include:

- Spool system for wiring
- End-mount tool boxes for hand tools
- Jack and pipe racks
- Lockable tool chests

Designed for belt moves, sleds are designed specific to the structure being moved in 100-150' increments.

Flat Haulers



Flat haulers are designed to be dragged behind equipment or moved with forks. General purpose hauling and lighter loads.

Base design features

- 1/4" or 1/2" reinforced plate deck
- Fork passes fits most fork configs
- I-beam runners
- Four 1" D-rings for tow and tie down
- 6' x 10'
- 7' x 10'
- 7' x 12'
- 7' x 16'
- 7' x 20'
- Custom sizes and specifications available

High Voltage Sled

Standard designs include:

- 8' x 12'
- 8' x 16'
- 8' x 20'
- Custom designs available

Features can include:

- Heavy reinforced plate deck
- 4 point 22,600 lbs drag chains
- Split compartment
- Can be scoop or fork mobile



Belt Sled



Belt sleds are designed for belt crews, low profile and are primarily as drag behind sleds. Additionally, equipment boxes and clamping equipment can be mounted to the build.

Standard designs include:

- 6' x 16'
- 6' x 20'
- 7' x 16'
- 7' x 18'
- 7' x 20'
- 8' x 20'

Features can include:

- 10 point tie-down, 3/4" D rings
- Deck can be solid or perforated
- Custom design available

Mesh Sled

Standard designs include:

- 6' x 10'
- 6' x 12'
- 6' x 16'
- Custom sizes available

Features can include:

- Low profile, 2' overall height
- Removable side panels
- Drag behind and fork mobile
- Perforated decking



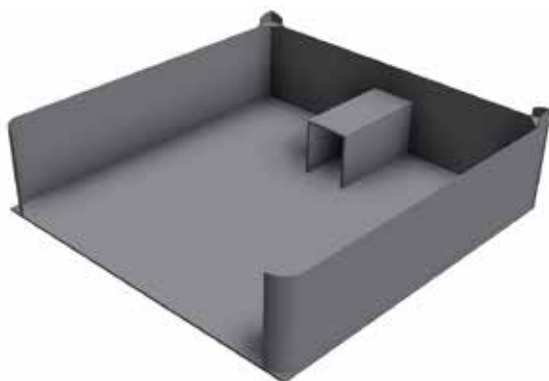
Basic Scoop Liner



Features include:

- Designed to line most scoop buckets
- General size: 6' x 8' x 30" h
- General purpose hauling
- 3/4" plate deck

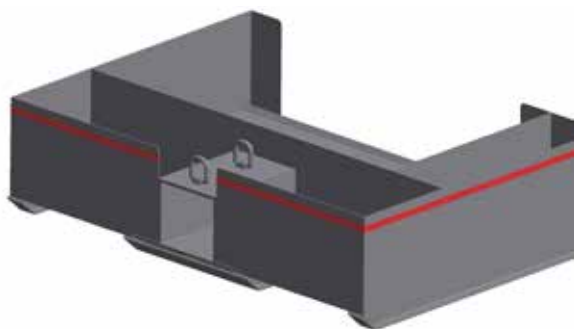
Scoop Liner w/ Ram Box



Features include:

- Designed to fit scoop ram
- General size: 6' x 10' x 26" h
- Rounded corners for safety
- 3/4" plate deck

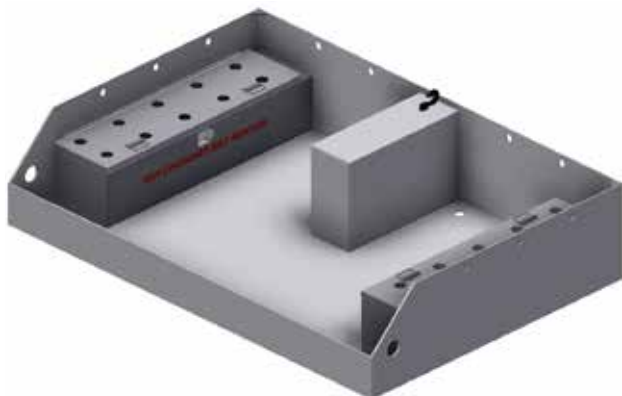
Equipment Scoop Liner



Features include:

- Designed to fit scoop ram
- Compartments for specified equipment
- General size: 6' x 10' x 26" h
- Fork mobile
- 3/4" plate deck

Rescue Scoop Liner



Features include:

- Low profile, 30" overall height
- Designed for 30-60 SCSR units
- Hauls section specific safety gear
- Solid deck includes drainage openings



Fork Mobile



Scoop Mobile

Rescue sleds are designed to the section requirements per individual mines, assisting with meeting safety requirements.

Standard Features Include:

- Overall size: 7' w x 12' l x 43" max height
- Fork or scoop mobile or combination designs
- Houses 54-64 Ocenco 6.5s units
- Sight glass for easy SCSR inspection
- Compartments for fire suppression equipment
- First aid compartment designed to mine spec
- Medical and Defib compartments
- Tie down grommets for life-line attachment
- Interior to house roof jacks and digging gear
- Customizations available

Engineered Trailers

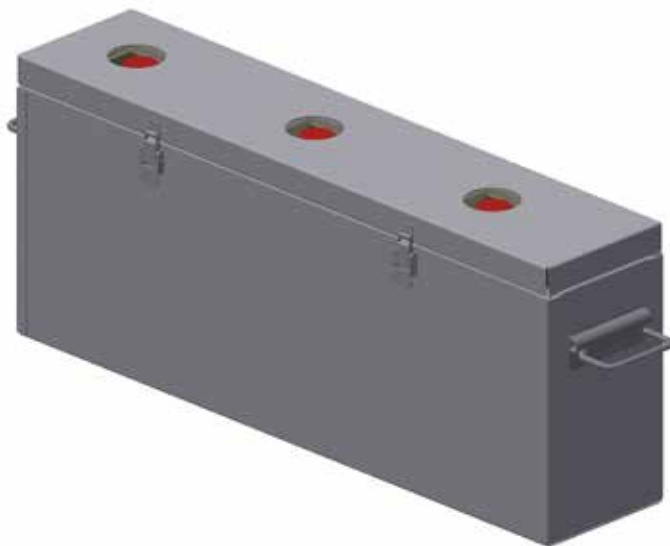


Rescue trailers are designed with all the same attributes as sleds, but are design to be pulled instead of carried. Optimized for low-profile mines.

Standard Features Include:

- Overall size: 8 1/2' w x 16 1/2' l x 36" max height
- Additional sizes available: 7'x10' and 7' x 12'
- Houses 30-64 Ocenco 6.5s units
- Replacable solid axel, rubber or steel wheels
- Removable side rails and tires for easy mobilization within the all mines
- Compartments for fire suppression equipment
- First aid compartment designed to mine spec
- Medical and Defib compartments
- 2" x 6" heavy duty steel tonuge
- Interior to house roof jacks and digging gear
- Customizations available

SCSR Cache Boxes

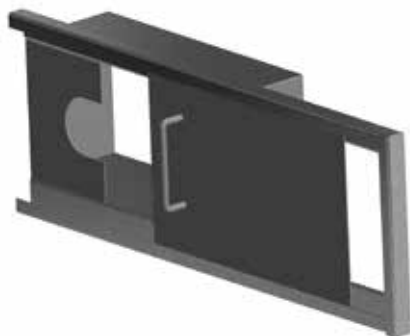


SCSR Caches are fabricated from either steel or aluminum, and designed to carry Ocenco 6.5s. All caches are designed with latches, sight glasses and handles.

Standard Designs:

- Portable design available in 1, 2, 4, 6 units
- Laydown design available in 10, 12, 16, 20, 30 and 36 units
- Sight glass for general inspection
- Available in stackable designs
- Available in bolt-down designs
- Custom designs available upon request

Rock Dust Doors



Rock dust doors are designed to be added to man doors, stoppings or equipment doors.

Standard Design Features:

- Frame dimensions: 30^{3/16}” W x 10^{1/2}” L x 7” H
- Rough opening: 6” W x 15^{3/8}” L x 7^{5/16}” H
- Door travel distance: 13”
- Max opening: 8^{3/8}”
- Available in 12 or 14 Ga galvanized steel
- Custom designs available upon request

Hand Carts



Hand carts designed to assist with material transport.

Standard Design Features:

- Overall width 26” and should fit through most man doors.
- 20” light weight steel wheels, solid rubber tires
- Compartment size: 10” W x 46” L x 8” D
- Custom designs available upon request

Can Dusters

Can dusters are designed as a safe and mobile alternative to rock dust application.

Features can include:

- Air requirements as low as 20 CFM
- Stationary or wheeled versions
- Capacity of over 500 lbs of dust
- Controllable discharge
- Discharge hoses can reach up to 300 ft



Belt Crossovers

Standard designs:

- 42" channel rail
- 48" channel rail
- 54" channel rail
- 42" round rail
- 48" round rail
- 54" round rail
- Custom sizes available

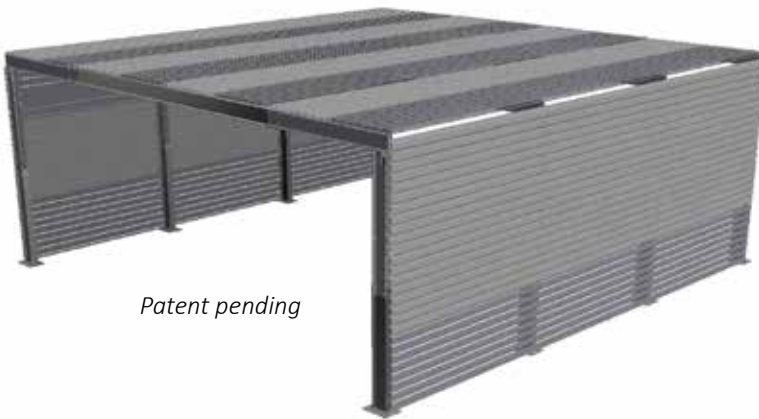
Features can include:

- Detachable or fixed ladders
- Optimized for maximum head clearance
- Available in arched or flat styles
- Attaches to channel or round rail
- Steel and aluminum designs available
- Adjustable height versions available
- Perforated or solid desking



Belt crossovers are designed for various belt sizes and styles, and built light for mobility; providing a safe mechanism to cross belt lines at various points in the mine.

Adjustable Overcasts



Patent pending

Standard Design Features:

- 5' to 10' high in 6" increments
- 16' to 24' wall side in 6' increments
- 14' to 26' beam side in 12" increments
- Can be conformed to fit angled entries
- Small, compact packaging for easier handling at mine site
- Kept in inventory for quick mobilization
- Design can be sprayed with gunite or finished with sealant

Ramp Crossing



Standard Design Features:

- Available in 3' x 10', 3' x 12'
- Designed to bolt together for easier mobility and installation
- 3/4" galvanized bar grating deck
- All ramps come with 3' handrailing
- Walk up designs available
- Custom sizes available

Overcast Stairs



Standard Sizes:

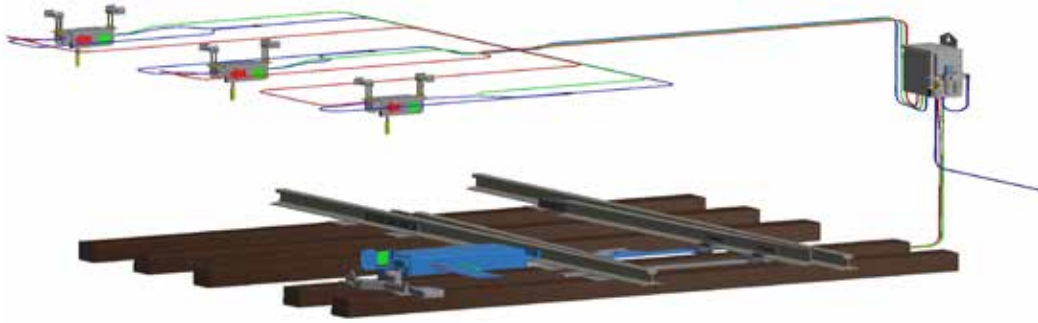
- 3' x 4'
- 3' x 5'
- 3' x 6'
- 3' x 7'
- 3' x 8'
- 3' x 10'
- 3' x 12'



Standard Sizes:

- 6' x 6'
- 6' x 8'
- 6' x 10'
- 6' x 12'
- Custom sizes

Remote Track Switch



The remote track switch is designed to be actioned with safety in mind. Easy to install to an existing track switch. The switch is available in air or electric builds.

Rebuilds / Refurbishment

GMS has performed many rebuild, refurbishment and full restorations on various pieces of mining equipment.



Maintenance Trailer Rebuild Before



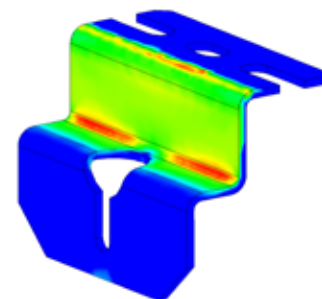
Maintenance Trailer Rebuild After

Engineering

The GMS Engineering department staffs a wide range of engineering talent and experience, and will assist with any custom design required by a mines. The engineering department works directly with the sales staff to optimize all designs for performance and efficiency.

Design Capabilities:

- 3D Renderings
- Approval drawings for any custom design
- Finite Element Analysis
- Professional Engineers on staff



Drop Bracket Analysis



GMS Corporate Region Fab Shop
170 Leon White Road
Mt Lake Park, MD 21550

GMS North Region Fab Shop
331 Eldersville Road
Burgettstown, PA 15021

GMS Midwest Fab Shop
1651 Progress Drive
Madisonville, KY 42431